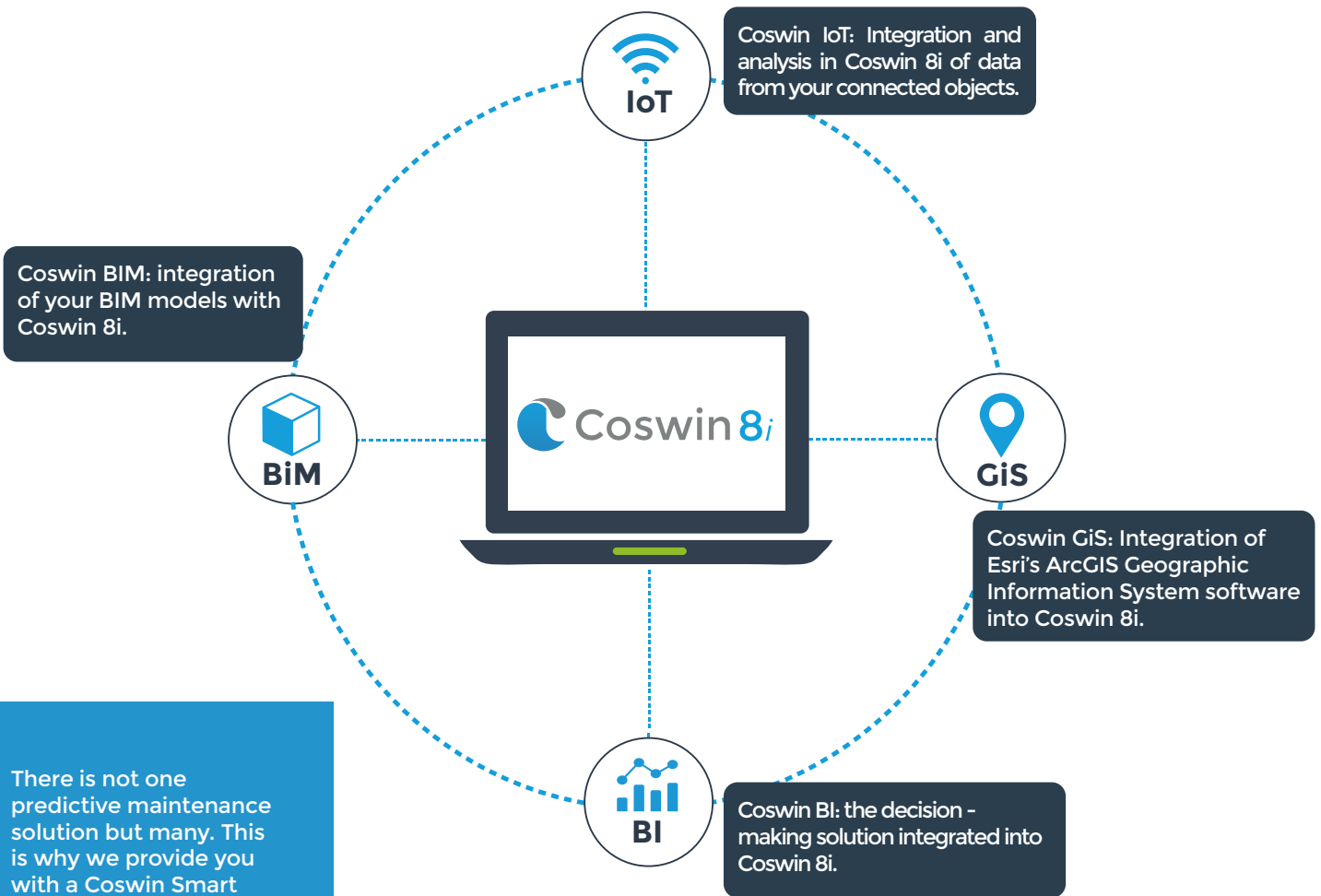




Switch to CMMS 4.0!

Our coswin 8i CMMS/EAM software enriched with 4 new modules - Coswin IoT, Coswin BIM, Coswin GIS & Coswin BI - to help companies meet the challenges of Industry 4.0 and Smart Building.



There is not one predictive maintenance solution but many. This is why we provide you with a Coswin Smart Generation solution adapted to your context and your organisation.

Coswin Smart Generation helps companies to implement predictive maintenance.



- Collection, processing and analysis of data from your IoT sensors,
- transmission to Coswin 8i via customisable alerts,
- triggering of associated maintenance requests.

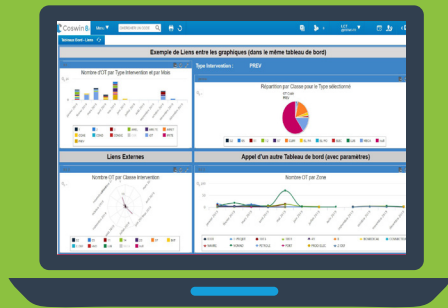
Combining CMMS and IoT technology



- Import & 3D visualisation of your IFC model in Coswin 8i,
- navigation in the model,
- association of Coswin 8i functions with the equipment identified in the model (Job Request, Work Order...).



Using your BIM model in CMMS

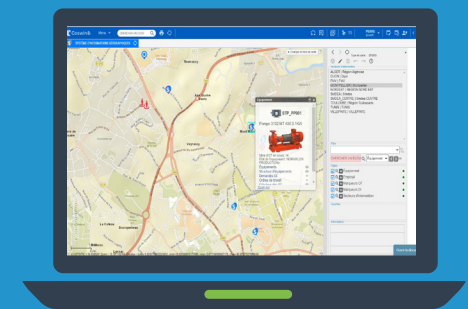


- Monitoring the performance of the maintenance activity,
- exploitation, analysis and restitution of data in real time,
- decision support.

Business Intelligence integrated into your CMMS



- Display of your ArcGIS maps in Coswin 8i,
- geolocation of your assets,
- triggering of geolocated maintenance interventions. (with notification to Coswin Nom@d users)



Geolocation of your assets and interventions



Siveco Group
 10-14 rue Joël le Theule - F78180 Montigny-le-Bretonneux
 +33 1 30 45 98 80 - contact@siveco.com

